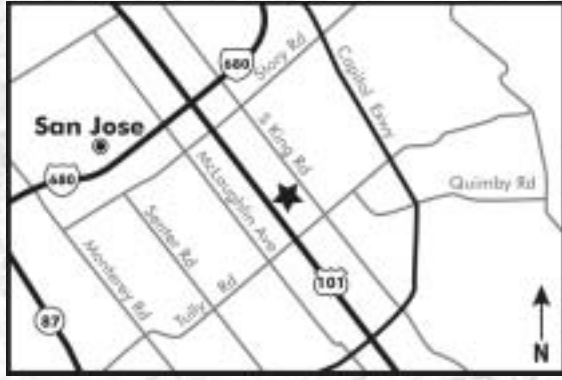




2155 LANAI AVENUE
 SAN JOSE CA 95122
 408.251.2746
 FAX 408.251.7301

Valley Palms
 APARTMENTS



W E L C O M E H O M E !

TO:



Valley Palms
 APARTMENTS



2155 LANAI AVENUE
 SAN JOSE CA 95122
 408.251.2746
 FAX 408.251.7301



Valley Palms
 APARTMENTS



Valley Palms
APARTMENTS

2155 LANAI AVENUE

SAN JOSE CA 95122

408.251.2746

FAX 408.251.7301

Welcome to your newly remodeled home!

Live in the heart of Silicon Valley where convenience is right out your front door...

Valley Palms is just minutes from all major highways, shopping plazas, restaurants and entertainment.

You will enjoy spacious floor plans, expansive grounds and attentive management staff.*

Amenities:

SPACIOUS One, Two and Two Bedroom Townhomes at an AFFORDABLE PRICE

OVERSIZED Patios & Balconies

THREE Sparkling Pools

TWO Large Playgrounds

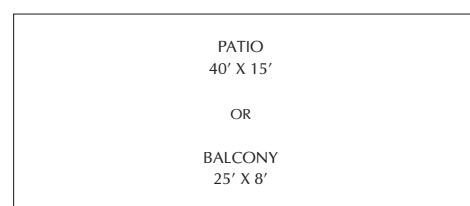
TENNIS & Basketball Courts

CONTROLLED Access Gates

CARPORTS

ALL APARTMENTS NEWLY REMODELED to include new carpeting and linoleum

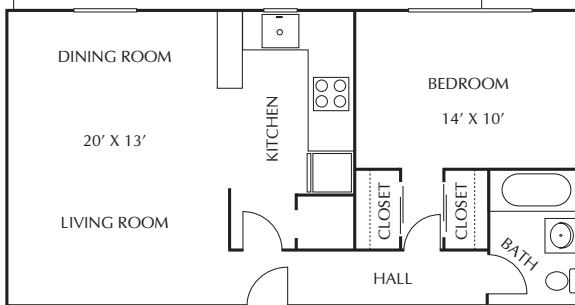
FULLY EQUIPPED KITCHENS with new appliances to include microwave, garbage disposal, range and refrigerator



**1 BEDROOM
1 BATH**

RENT _____

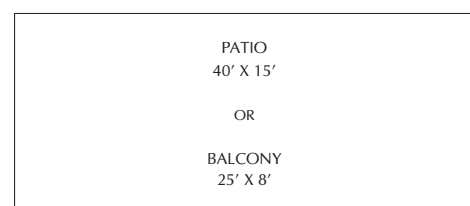
DEPOSIT _____



**2 BEDROOM
1 BATH**

RENT _____

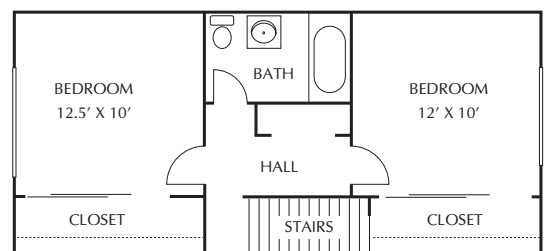
DEPOSIT _____



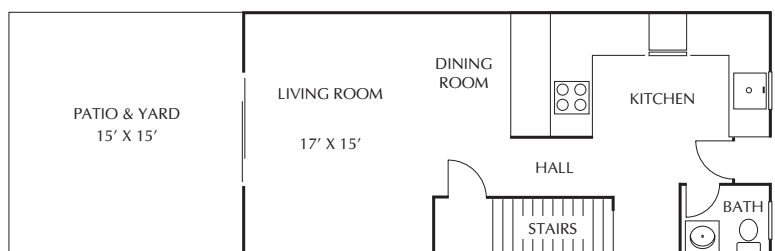
**2 BEDROOM
1.5 BATH
TOWNHOUSE**

RENT _____

DEPOSIT _____



SECOND FLOOR



FIRST FLOOR

*Income Restrictions Apply